

MONA OFFSHORE WIND PROJECT

Response to Martyn and Margaret Hussey D3 Submission - Onshore Substation Cross-Section Profile

Deadline: 4

Application Reference: EN010137

Document Reference: S_D4_25.1

Document Number: MOCNS-J3303-RPS-10422

4 November 2024

F01



Document status

Version	Purpose of document	Authored by	Reviewed by	Approved by	Review date
F01	Submission at D4	RPS	Mona Offshore Wind Ltd	Mona Offshore Wind Ltd	4 Nov 2024

Prepared by:

RPS

Prepared for:

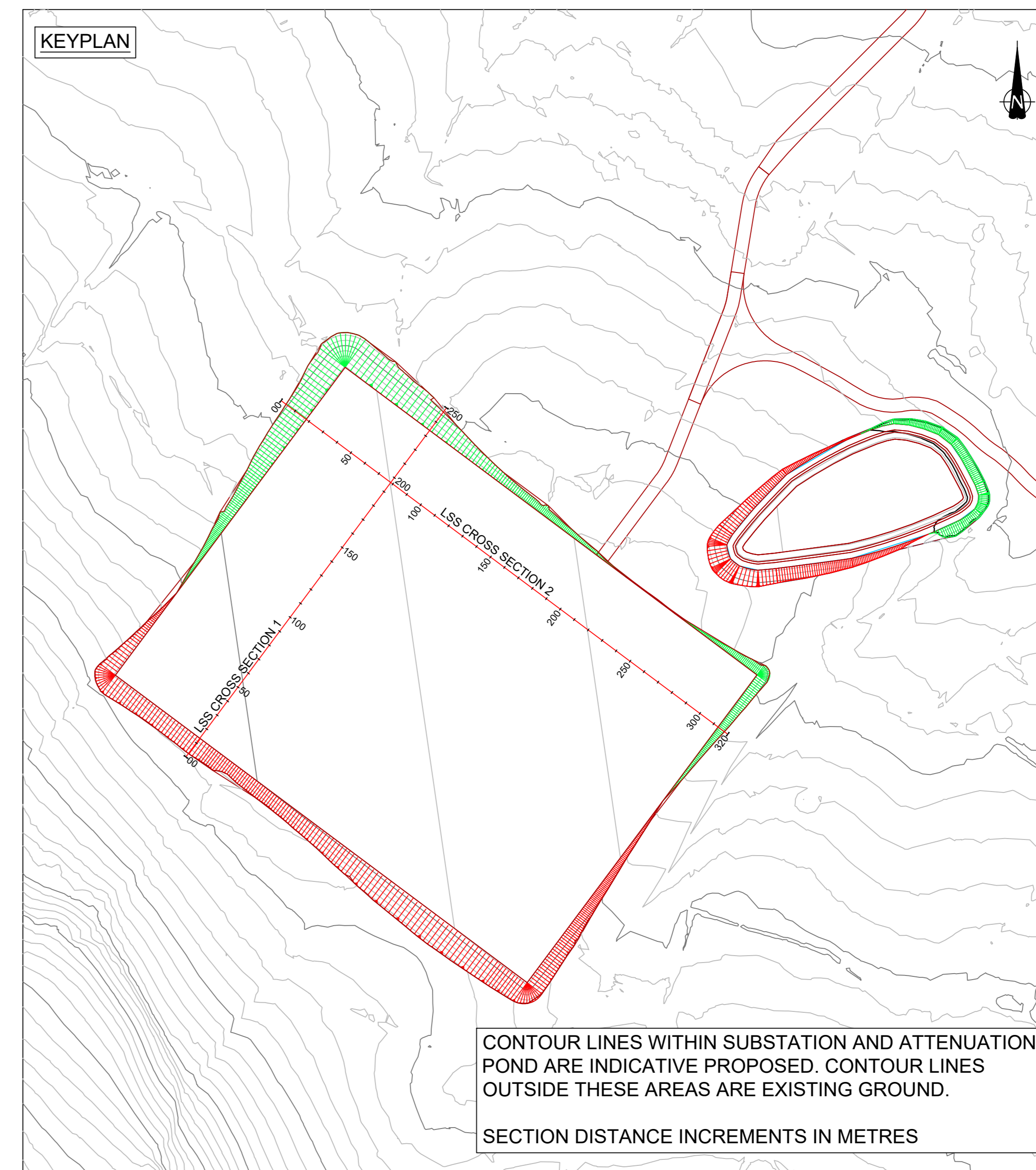
Mona Offshore Wind Ltd.

KEY

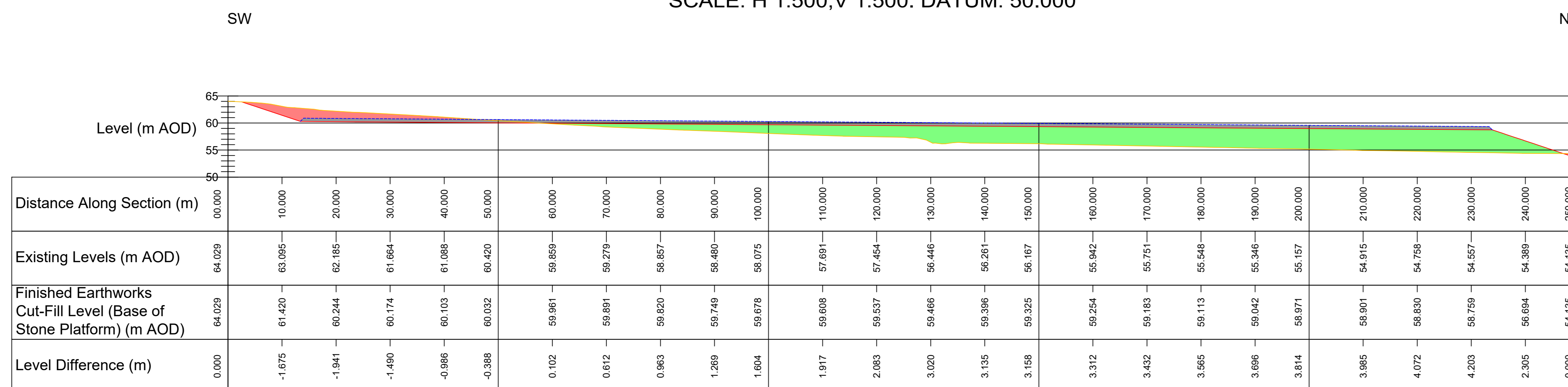
- EXISTING GROUND LEVEL
- FINISHED EARTHWORKS CUT-FILL LEVEL (BASE OF STONE PLATFORM)
- FINISHED LEVEL
- EARTHWORKS FILL
- EARTHWORKS CUT
- ILLUSTRATIVE STONE WORKING PLATFORM

NOTES:

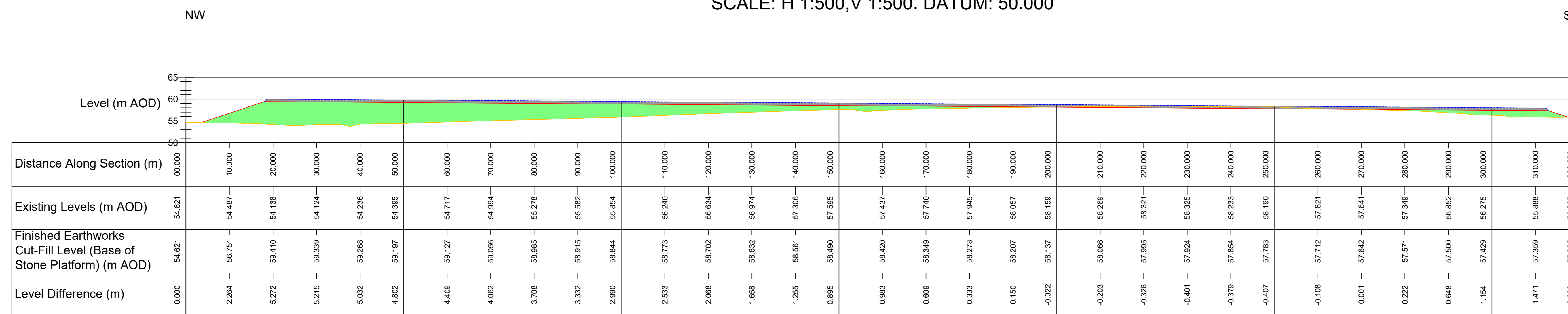
- GROUND LEVEL PROFILE AND CONTOURS DERIVED FROM SELECTED NATURAL RESOURCES WALES LIDAR TILES.
- ALL LEVELS AND LAYOUT DETAILS ARE ILLUSTRATIVE AND ARE SUBJECT TO DETAILED DESIGN.



ONSHORE SUBSTATION CROSS SECTION 1
SCALE: H 1:500, V 1:500. DATUM: 50.000



ONSHORE SUBSTATION CROSS SECTION 2
SCALE: H 1:500, V 1:500. DATUM: 50.000



A	FIRST ISSUE	REV	DATE	BY	CHK

CLIENT: MONA OFFSHORE WIND LTD

PROJECT: MONA OFFSHORE WIND FARM

DRAWING TITLE: INDICATIVE ONSHORE SUBSTATION SITE LEVELS

DRG No:	ED13798-088	REV:	A	DATE:	30 OCT 2024
DRG SIZE:	A0	SCALE:	1:500	CHECKED BY:	MW
DRAWN BY:	AJC	APPROVED BY:	MW		

